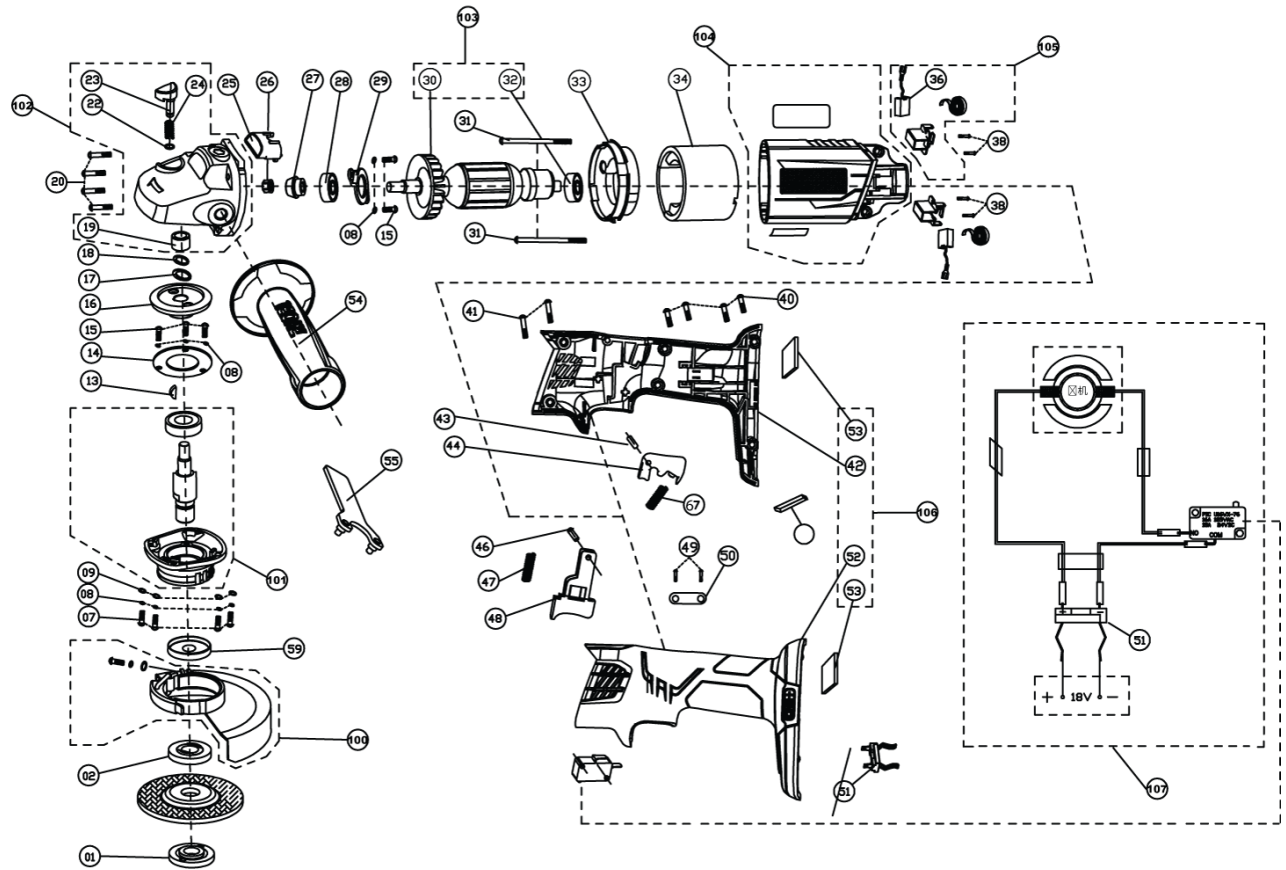


R18AG0 18V ANGLE GRINDER XXX

5133001903 - R18AG-0 - 4000444141





Position	Quantity	Description	Part number	EAN
001 1	1	CLAMPING FLANGE	5131037426	4002395290154
002 2	1	CLAMPING FLANGE	5131037427	4002395290161
007 3	4	SCREW	Item discontinued(5131031189)	
008 4	9	WASHER	Item discontinued(5131031190)	
009 5	4	WASHER	Item discontinued(5131031191)	
013 6	1	KEY	5131031192	4058546128258
014 7	1	BEARING COVER	Item discontinued(5131031193)	
015 8	5	SCREW	Item discontinued(5131031194)	
016 9	1	GEAR	Item discontinued(5131031195)	
017 10	1	WASHER	Item discontinued(5131031196)	
018 11	1	SPRING RING	Item discontinued(5131031197)	
019 12	1	NEEDLE BEARING	Item discontinued(5131031223)	
020 13	4	SCREW	Item discontinued(5131031198)	
022 14	1	SPRING RING	Item discontinued(5131031224)	
023 15	1	LOCKING PIN	Item discontinued(5131031225)	
024 16	1	SPRING	Item discontinued(5131031226)	
025 17	1	COVER	Item discontinued(5131031199)	
026 18	1	NUT	Item discontinued(5131031200)	
027 19	1	PINION	Item discontinued(5131031201)	
028 20	1	BALL BEARING	5131031202	4058546128265
029 21	1	BEARING COVER	Item discontinued(5131031203)	
031 22	2	SCREW	Item discontinued(5131031204)	
033 23	1	FAN HOUSING	Item discontinued(5131031205)	
034 24	1	ELECTRIC FIELD	Item discontinued(5131031206)	
036 25	2	CARBON BRUSH	Item discontinued(5131031230)	
038 26	4	SCREW	Item discontinued(5131031207)	
040 27	4	SCREW	Item discontinued(5131031208)	
041 28	2	SCREW M4.2x35mm	Item discontinued(5131031209)	
043 29	1	PIN	5131031210	4058546128296
044 30	1	LOCKING LEVER	5131031211	4058546128302
046 31	1	PIN	5131031212	4058546128319
047 32	1	SPRING	5131031213	4058546128326
048 33	1	TRIGGER	Item discontinued(5131031214)	
049 34	2	SCREW	Item discontinued(5131031215)	
050 35	1	PRESSURE PLATE	Item discontinued(5131031216)	
051 36	1	CONNECTION PLATE	Item discontinued(5131031233)	
054 37	1	AUXILIARY HANDLE	Item discontinued(5131031217)	
055 38	1	WRENCH	Item discontinued(5131031218)	
059 39	1	DUST SEAL	Item discontinued(5131031219)	
100 40	1	GUARD	5131037463	4002395289523
101 41	1	GEAR KIT	Item discontinued(5131031221)	
102 42	1	GEAR BOX ASSY	Item discontinued(5131031222)	
103 43	1	ARMATURE ASSEMBLY	Item discontinued(5131031227)	
104 44	1	MOTOR HOUSING	Item discontinued(5131031228)	
105 45	1	BRUSH HOLDER COMPL.	Item discontinued(5131031229)	
106 46	1	HANDLE	Item discontinued(5131031231)	
107 47	1	SWITCH	Item discontinued(5131031232)	