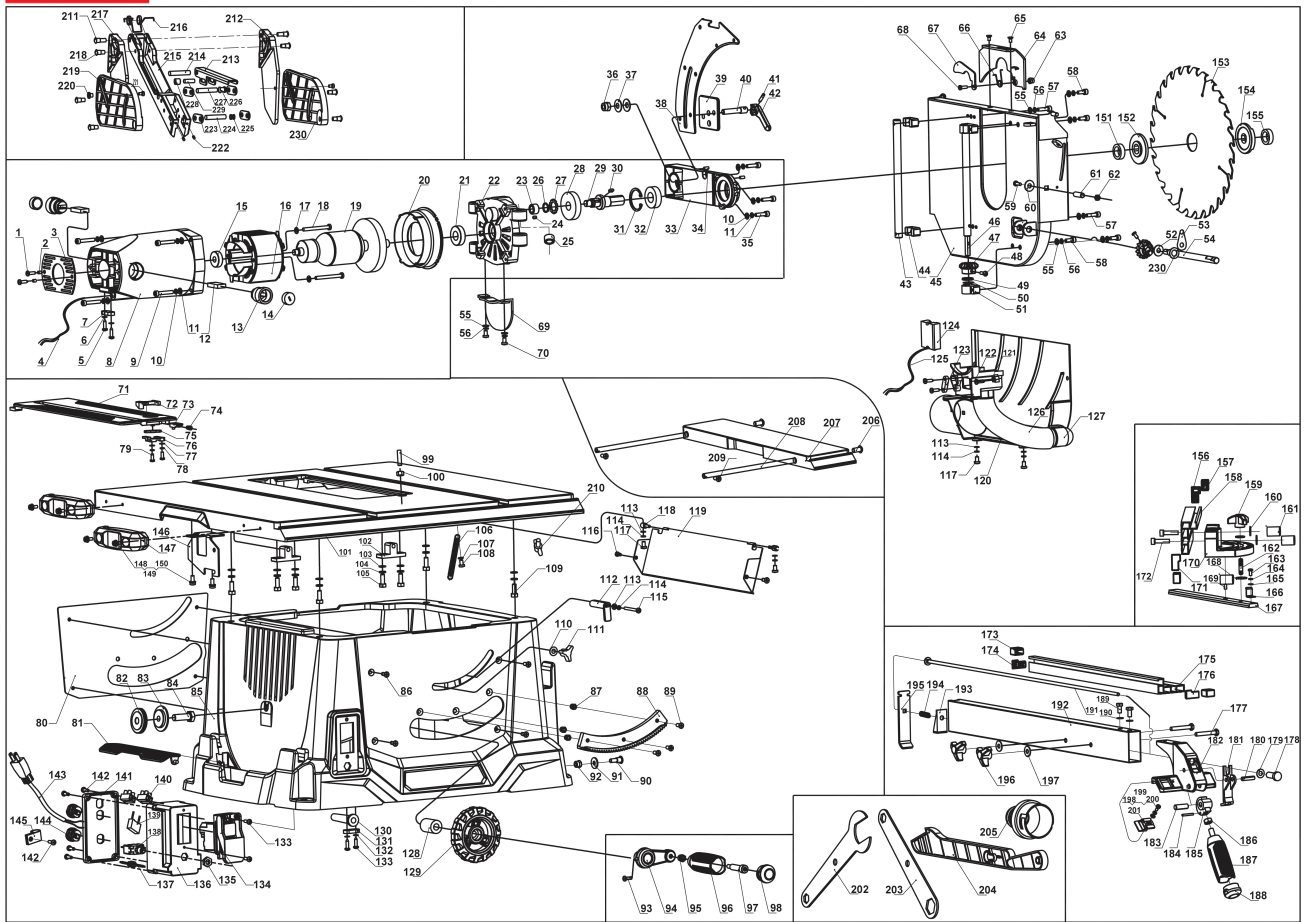


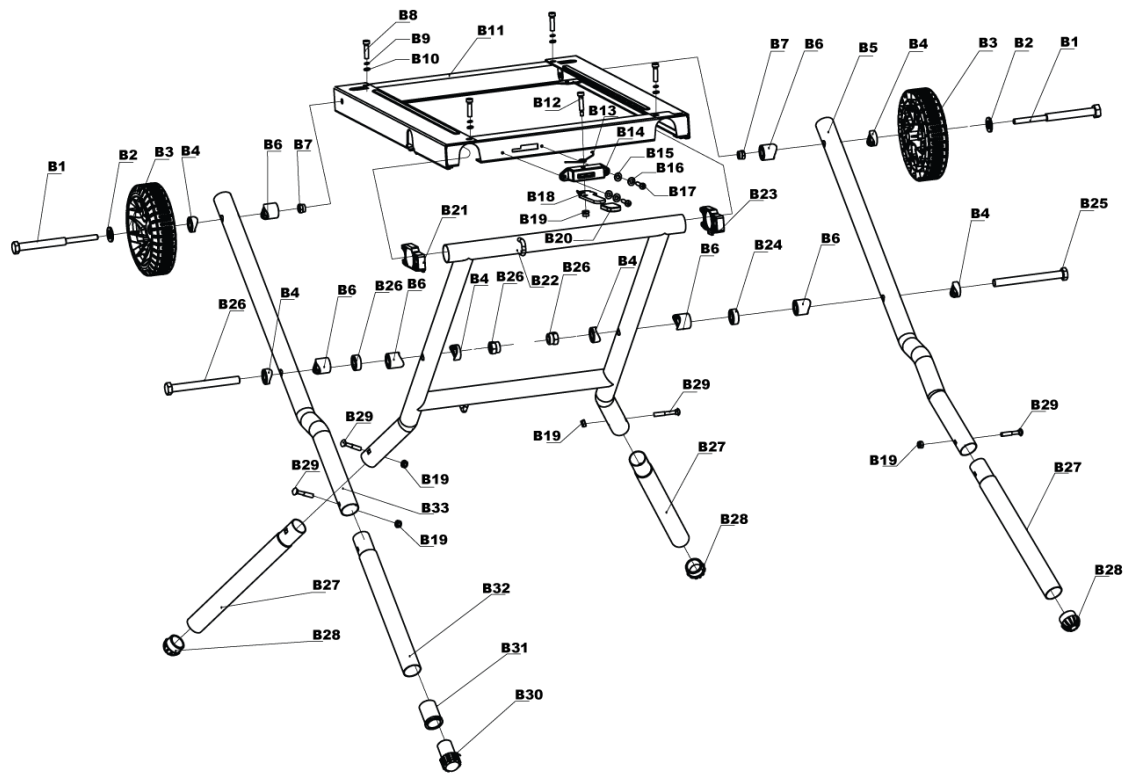
RTS1800EF-G 1800W TABLE SAW+STD GB2

5133002026 - RTS1800EF - 4000444248



RTS1800EF

RYOBI



Position	Quantity	Description	Part number	EAN
001 1	2	SCREW M4X8MM	Item discontinued(5131032516)	
002 2	1	THREADED PIN M4X6	Item discontinued(5131032517)	
003 3	1	MOTOR END COVER	Item discontinued(5131032518)	
004 4	1	MOTOR CORD VC3X1.0X590MM	5131032519	4058546136031
005 5	2	PAN HEAD TAPPING SCREW ST4.2X16	Item discontinued(5131032520)	
006 6	2	SMALL WASHER DIA 4.3XDIA8X0.5T	5131032521	4058546136055
007 7	1	CORD CLAMP	Item discontinued(5131032522)	
008 8	1	MOTOR HOUSING	5131032523	4058546136079
009 9	4	HEXAGON SOCKET CAP SCREW M5X35	Item discontinued(5131032524)	
010 10	7	SPRING WASHER DIA 5	Item discontinued(5131032525)	
011 11	7	FLAT WASHER DIA 5.3	Item discontinued(5131032526)	
012 12	2	CARBON BRUSH	5131032527	4058546136116
013 13	2	BRUSH HOLDER	Item discontinued(5131032528)	
014 14	2	BRUSH COVER	Item discontinued(5131032529)	
015 15	1	DEEP GROOVE BALL BEARING 629-2Z	5131032530	4058546136147
016 16	1	STATOR ASSEMBLY	5131032531	4058546136154
017 17	2	FLAT WASHER DIA 5.5	Item discontinued(5131032532)	
018 18	2	PAN HEAD TAPPING SCREW ST4.8X65	Item discontinued(5131032533)	
019 19	1	ARMATURE ASSEMBLY	5131032534	4058546136185
020 20	1	AIR SEAL RING	5131032535	4058546136192
021 21	1	DEEP GROOVE BALL BEARING 6002-2Z	5131032536	4058546136208
022 22	1	GEAR BOX	5131032537	4058546136215
023 23	1	NEEDLE BEARING HK1010	5131032538	4058546136222
024 24	2	SCREW WITH FLAT POINT M5X6	5131032804	4058546138707
025 25	1	PRECISION SLIDING SLEEVE	5131032805	4058546138714
026 26	1	CIRCLIPS FOR SHAFT DIA 14	5131032541	4058546136253
027 27	1	WAVE SPRING WASHER DIA 14	5131032542	4058546136260
028 28	1	BIG GEAR 40CR	5131032543	4058546136277
029 29	1	OUTPUT SHAFT	5131032544	4058546136284
030 30	1	PARALLEL KEY 4X4X8	5131032545	4058546136291
031 31	1	CIRCLIPS FOR HOLE DIA 35	5131032546	4058546136307
032 32	1	DEEP GROOVE BALL BEARING 6003-2RS	5131032547	4058546136314
033 33	1	ACCEPTANCE	5131032548	4058546136321
034 34	2	PARALLEL PIN	Item discontinued(5131032549)	
035 35	3	HEXGON SOCKET CAP SCREW M5X18	Item discontinued(5131032550)	
036 36	1	HEXAGON FULL NUT M8	5131032551	4058546136352
037 37	2	LOCK WASHER	Item discontinued(5131032552)	
038 38	1	SPLITTING WEDGE	5131032553	4058546136376
039 39	1	PLATE	Item discontinued(5131032554)	
040 40	1	LOCK SHAFT	Item discontinued(5131032555)	
041 41	1	SPRING PINS,HEAVY TYPE DIA 4X18	Item discontinued(5131032556)	
042 42	1	LOCK HANDLE	Item discontinued(5131032557)	
043 43	1	GUIDE POST	5131032558	4058546136420
044 44	2	GUIDE PAD	5131032559	4058546136437
045 45	1	LOW BLADE GUARD	Item discontinued(5131032560)	
046 46	1	ADJUSTMENT ROD	5131032561	4058546136444
047 47	2	BEVEL GEAR	5131032562	4058546136451
048 48	2	PAN HEAD SCREW M4X20	Item discontinued(5131032563)	
049 49	1	FRICTION WASHER A	5131032564	4058546136475
050 50	1	FRICTION WASHER	Item discontinued(5131032806)	

Position	Quantity	Description	Part number	EAN
051 51	2	FIX BLOCK	5131032566	4058546136482
052 52	1	FRICTION WASHER B	5131032567	4058546136499
053 53	1	SPRING HANGER	Item discontinued(5131032807)	
054 54	1	ADJUSTMENT ROD	5131032569	4058546136512
055 55	8	FLAT WASHER DIA 5.3	Item discontinued(5131032526)	
056 56	8	SPRING WASHER DIA 5	Item discontinued(5131032525)	
057 57	2	HEXGON SOCKET CAP SCREW M5X25	Item discontinued(5131032572)	
058 58	4	HEXGON SOCKET CAP SCREW M5X16	Item discontinued(5131032573)	
059 59	1	CARRIAGE BOLTS M6X50	Item discontinued(5131032574)	
060 60	3	WAVE SPRING WASHER DIA 8	Item discontinued(5131032575)	
061 61	1	SLEEVE	Item discontinued(5131032576)	
062 62	1	HEXAGON NUT M6	5131032577	4058546136598
063 63	1	HEXAGON FULL NUT M4	Item discontinued(5131032578)	
064 64	1	SCALEBOARD	Item discontinued(5131032579)	
065 65	2	HEAD TAPPING SCREW ST4.2X12	Item discontinued(5131032580)	
066 66	1	SPRING	Item discontinued(5131032581)	
067 67	1	SAFETY GUARD	Item discontinued(5131032582)	
068 68	1	PAN HEAD SCREW M4X12	Item discontinued(5131032583)	
069 69	1	LOW GUARD	Item discontinued(5131032584)	
070 70	2	PAN HEAD SCREW M5X12	5131032585	4058546136673
071 71	1	INSERT	5131032492	4058546135768
072 72	1	KEY	Item discontinued(5131032587)	
073 73	1	INSERT	5131032588	4058546136703
074 74	1	SPRING	5131032589	4058546136710
075 75	1	LINKAGE	Item discontinued(5131032590)	
076 76	1	PLATE	Item discontinued(5131032591)	
077 77	2	SMALL WASHER DIA 4.3XDIA8X0.5T	5131032521	4058546136055
078 78	2	SPRING WASHER DIA 4	Item discontinued(5131032593)	
079 79	2	PAN HEAD SCREW M4X10	Item discontinued(5131032594)	
080 80	1	CABINET SCALEBOARD	5131032595	4058546136772
081 81	1	TOOL BOX COVER	Item discontinued(5131032596)	
082 82	1	BLADE STOCK KNOB	5131032597	4058546136796
083 83	1	WRENCH SEAT	5131032598	4058546136802
084 84	1	HEXAGON HEAD SCREW	Item discontinued(5131032599)	
085 85	1	CABINET	Item discontinued(5131032600)	
086 86	4	HEAD SCREW M4X6	Item discontinued(5131032601)	
087 87	3	HEXAGON FULL NUT M5	5131032602	4058546136833
088 88	1	RACK	5131032603	4058546136840
089 89	3	HEAD SCREW M5X14	Item discontinued(5131032604)	
090 90	1	SCREW	Item discontinued(5131032605)	
091 91	1	FLAT WASHER DIA,8XDIA,32X2	5131032679	4058546137571
092 92	3	HEXAGON FULL NUT M6	Item discontinued(5131032808)	
093 93	4	CABINET FEET	5131032608	4058546136895
094 94	1	PAN HEAD SCREW M6X16	5131032610	4058546136918
095 95	1	HAND WHEEL ARM	5131032611	4058546136925
096 96	1	HEXAGON FULL NUT M6	5131032612	4058546136932
097 97	1	HANDLE	5131032613	4058546136949
098 98	1	HANDLE SCREW	5131032614	4058546136956
099 99	1	HANDLE COVER	5131032615	4058546136963
100 100	2	SCREW WITH FLAT POINT M6X25	Item discontinued(5131032616)	

Position	Quantity	Description	Part number	EAN
101 101	2	HEXAGON NUT M6	Item discontinued(5131032617)	
102 102	1	MAIN TABLE	5131032618	4058546198510
103 103	2	ADJUSTMENT BLOCK	Item discontinued(5131032619)	
104 104	7	FLAT WASHER-A CLASS DIA 6.4	Item discontinued(5131032620)	
105 105	7	SPRING WASHER Ø6	Item discontinued(5131032621)	
106 106	4	HEXAGON HEAD SCREW M6X20	Item discontinued(5131032622)	
107 107	1	SPRING	Item discontinued(5131032623)	
108 108	7	FLAT WASHER-A CLASS DIA 6.4	Item discontinued(5131032620)	
109 109	1	HEXGON SOCKET CAP SCREW M6X12	Item discontinued(5131032625)	
110 110	4	HEXAGON HEAD SCREW M6X25	Item discontinued(5131032626)	
111 111	2	BIG FLAT WASHER DIA 6	Item discontinued(5131032627)	
112 112	1	BEVEL LOCK LEVER	5131032628	4058546137076
113 113	1	BEVEL INDICATOR	5131032629	4058546137083
114 114	3	BIG WASHER DIA,4,3	5131032842	4058546138806
115 115	5	SPRING WASHER DIA 4	Item discontinued(5131032593)	
116 116	1	PAN HEAD SCREW M4X50	Item discontinued(5131032632)	
117 117	2	PAN HEAD SCREW M4X8	Item discontinued(5131032633)	
118 118	4	PAN HEAD SCREW M4X14	5131032634	4058546137137
119 119	2	PIN	Item discontinued(5131032635)	
120 120	1	FLAPPER	5131032636	4058546137151
121 121	1	DUST GUIDE PLATE	5131032637	4058546137168
122 122	2	SCREW M4X8MM	Item discontinued(5131032516)	
123 123	1	PRESSING LINE PLATE	Item discontinued(5131032757)	
124 124	1	SOFT START	5131032758	4058546138301
125 125	1	INNER WIRE FOR SOFT START	Item discontinued(5132032759)	
126 126	1	DUST HOSE	Item discontinued(5131032640)	
127 127	1	HOSE CONNECTOR-B	Item discontinued(5131032641)	
128 128	1	HANDLE SLEEVE	Item discontinued(5131032642)	
129 129	1	HANDLE WHEEL	Item discontinued(5131032643)	
130 130	1	STRAIN RELIEF	Item discontinued(5131032644)	
131 131	1	CORD CLAMP	Item discontinued(5131032645)	
132 132	2	SMALL WASHER DIA 4.3XDIA8X0.5T	5131032521	4058546136055
133 133	4	PAN HEAD TAPPING SCREW ST4.2X16	Item discontinued(5131032520)	
134 134	1	SWITCH	5131032648	4058546137267
135 135	1	RING OF CIRCUIT BREAKER	5131032649	4058546137274
136 136	1	SWITCH BOX	5131032650	4058546137281
137 137	1	INDUCTOR	5131032651	4058546137298
138 138	1	OVERLOAD PROTECTOR	5131032652	4058546137304
139 139	1	CAPACITANCE	Item discontinued(5131032653)	
140 140	2	CORD CONNECTOR	Item discontinued(5131032654)	
141 141	1	SWITCH COVER	Item discontinued(5131032655)	
142 142	5	PAN HEAD TAPPING SCREW ST4.2X10	Item discontinued(5131032656)	
143 143	1	POWER CORD WITH BS PLUG	Item discontinued(5131032802)	
144 144	2	STRAIN RELIEF	Item discontinued(5131032658)	
145 145	1	CORD CLAMP	Item discontinued(5131032659)	
146 146	1	BLADE GUARD STOCK PLATE	Item discontinued(5131032660)	
147 147	2	SUPPORTING FOOT	Item discontinued(5131032760)	
148 148	6	FLAT WASHER DIA 5.5	Item discontinued(5131032661)	
149 149	6	SPRING WASHER DIA 5	Item discontinued(5131032525)	
150 150	6	PAN HEAD SCREW M5X12	5131032585	4058546136673

Position	Quantity	Description	Part number	EAN
151 151	1	PAD	5131032664	4058546137427
152 152	1	PRESSURE PLATE	5131032497	4058546135812
154 153	1	CLAMPING FLANGE	5131032498	4058546135829
155 154	1	BLADE NUT	Item discontinued(5131032668)	
156 155	1	FRONT CAP	5131032670	4058546137489
157 156	2	KNOB	5131032671	4058546137496
158 157	1	SHORT FENCE	5131032672	4058546137502
159 158	1	KNOB	5131032673	4058546137519
160 159	3	WASHER DIA 6.4	5131032674	4058546137526
161 160	2	LOCK KNOB	5131032675	4058546137533
162 161	1	BOLTS WITH DOUBLE NIP	5131032676	4058546137540
163 162	2	PAN HEAD SCREW M4X8	Item discontinued(5131032633)	
164 163	2	SMALL WASHER DIA 4.3XDIA8X0.5T	5131032521	4058546136055
165 164	4	SPRING WASHER DIA 4	Item discontinued(5131032593)	
166 165	1	POINTOR	5131032680	4058546137588
167 166	1	MITER GAUGE BAR	5131032681	4058546137595
168 167	1	FLAT WASHER DIA,8XDIA,32X2	5131032679	4058546137571
169 168	1	PIN	Item discontinued(5131032683)	
170 169	1	MITER GAUGE	5131032684	4058546137625
171 170	1	END CAP	Item discontinued(5131032685)	
172 171	2	HEXAGON NUT M6	Item discontinued(5131032617)	
173 172	2	END CAP-1	5131032688	4058546137663
174 173	1	END CAP-2	5131032689	4058546137670
175 174	1	AUXILLIARY FENCE	5131032690	4058546137687
176 175	1	END CAP-3	5131032691	4058546137694
177 176	2	HEXAGON HEAD SCREW M6X35	5131032692	4058546137700
178 177	1	ADJUSTMENT NUT	5131032693	4058546137717
179 178	1	FLAT WASHER DIA 8.4	5131032694	4058546137724
180 179	1	PIN	5131032695	4058546137731
181 180	1	REAR PLATE	5131032696	4058546137748
182 181	1	FENCE BLOCK	5131032697	4058546137755
183 182	1	CAM PIN	5131032698	4058546137762
184 183	1	SPRING PIN,HEAVY TYPE DIA 3X25	5131032699	4058546137779
185 184	1	CAM	5131032700	4058546137786
186 185	1	HEXAGON NUT M6	5131032577	4058546136598
187 186	1	HANDLE	5131032702	4058546137809
188 187	1	HANDLE COVER	5131032703	4058546137816
189 188	2	HEXAGON HEAD SCREW M6X12	Item discontinued(5131032704)	
190 189	2	EXT. TOOTH WASHER DIA 6	Item discontinued(5131032705)	
191 190	1	CONNECT ROD	5131032706	4058546137847
192 191	1	RIP FENCE	5131032707	4058546137854
193 192	1	REAR INSERT PANEL	5131032708	4058546137861
194 193	1	SPRING FOR THE ROD	5131032709	4058546137878
195 194	1	REAR PANEL	5131032710	4058546137885
196 195	2	KNOB	5131032711	4058546137892
197 196	2	FLAT WASHER DIA,8XDIA,32X2	5131032679	4058546137571
198 197	1	PAN HEAD SCREW M4X8	Item discontinued(5131032633)	
199 198	1	SMALL WASHER DIA 4.3XDIA8X0.5T	5131032521	4058546136055
200 199	1	SPRING WASHER DIA 4	Item discontinued(5131032593)	
201 200	1	INDICATOR	5131032716	4058546137946

Position	Quantity	Description	Part number	EAN
202 201	1	BIG WRENCH	5131032718	4058546137953
203 202	1	SMALL WRENCH	5131032719	4058546137960
204 203	1	DUST PORT	Item discontinued(5131032721)	
205 204	1	DUST PORT	Item discontinued(5131032721)	
206 205	2	EXTEND SCREW PIN	5131032539	4058546136239
207 206	1	EXTENSION TABLE	5131032540	4058546136246
208 207	2	EXTENSION BAR	Item discontinued(5131032565)	
209 208	1	PAN HD SCREW WITH CROSS RECESSED MX8	5131032568	4058546136505
210 209	2	BUTTERFLY KNOB	5131032809	4058546138752
211 210	2	SCREW FOR BLADE GUARD	Item discontinued(5131032592)	
212 211	1	FRONT LEFT PROTECT GUARD	5131032630	4058546137090
213 212	1	LOCK KNOB OF THE PROTECT GUARD	5131032646	4058546137250
214 213	2	LOCKKNOB SHAFT OF THE PROTECT GUARD	Item discontinued(5131032714)	
215 214	1	SWINGING ARM OF THE PROTECT GUARD	5131032701	4058546137793
216 215	1	PROTECT GUARD TORSION SPRING	Item discontinued(5131032663)	
217 216	1	FRONT RIGHT PROTECT GUARD	5131032631	4058546137106
218 217	6	SCREW ON THE PROTECT GUARD	Item discontinued(5131032715)	
219 218	1	FRONT REAR PROTECT GUARD	5131032678	4058546137564
220 219	2	CONNECTOR SCREW OF PROTECT GUARD	5131032607	4058546136888
221 220	2	PAN HEAD SCREW M4X6	5131032682	4058546137601
222 221	2	SCREW WITH FLAT POINT M5X8	Item discontinued(5131032712)	
223 222	4	LOCK LINKAGE OF THE PROTECT GUARD	Item discontinued(5131032686)	
224 223	1	LINKAGE SHAFT SHORT BUSHING	Item discontinued(5131032662)	
225 224	1	LINKAGE SHAFT LONG BUSHING	Item discontinued(5131032571)	
226 225	1	SHAFT OF THE BUSHING FOR PROTECT GUARD	Item discontinued(5131032677)	
227 226	1	CENTRAL SHAFT BUSHING	Item discontinued(5131032713)	
228 227	1	CENTRAL SHAFT	Item discontinued(5131032747)	
229 228	1	REAR LEFT PROTECT GUARD	Item discontinued(5131032748)	
230 229	1	FLAT WASHER DIA 10	Item discontinued(5131032761)	
300 230	1	SETTING GAUGE	Item discontinued(5131032496)	
400 231	1	GUIDE RAIL	5131032495	4058546135799
B01 232	1	THREADED BOLT	5131033601	4002395149407
B02 233	2	FLAT WASHER DIA,13,5	Item discontinued(5131032725)	
B03 234	2	WHEEL	5131032762	4058546138349
B04 235	6	SHORT SLEEVE	5131032763	4058546138356
B05 236	1	REAR FEET 30	5131032764	4058546138363
B06 237	6	LONG SLEEVE	5131032765	4058546138370
B07 238	2	HEXAGON FULL NUT M8	5131032551	4058546136352
B08 239	4	HEXAGON HEAD SCREW M6X25	Item discontinued(5131032626)	
B09 240	4	SPRING WASHER Ø6	Item discontinued(5131032621)	
B10 241	4	BIG WASHER 6,6	Item discontinued(5131032766)	
B11 242	1	RAMWORK ASSEMBLY	Item discontinued(5131032767)	
B12 243	1	HEX,SOCKET CAP SCREW M6X30	5131032768	4058546138400
B13 244	1	BRACKAGE SPRING	5131032769	4058546138417
B14 245	1	FIX BLOCK	5131032770	4058546138424
B15 246	2	FLAT WASHER DIA 5.3	Item discontinued(5131032526)	
B16 247	2	SPRING WASHER DIA 4	Item discontinued(5131032593)	
B17 248	2	PAN HEAD SCREW M5X12	5131032585	4058546136673
B18 249	1	HOOK	5131032771	4058546138431
B19 250	5	HEXAGON FULL NUT M6	5131032612	4058546136932

Position	Quantity	Description	Part number	EAN
B20 251	1	HOOK CAP	Item discontinued(5131032772)	
B21 252	1	RIGHT SLIDING BUSHING	Item discontinued(5131032773)	
B22 253	1	SUPPORT ASSY	Item discontinued(5131032774)	
B23 254	1	LEFT SLIDING BUSHING	Item discontinued(5131032775)	
B24 255	2	MIDDLE SLEEVE	Item discontinued(5131032776)	
B25 256	2	HEXAGON HEAD SCREW M12X130	Item discontinued(5131032777)	
B26 257	2	HEXAGON FULL NUT M12	5131032778	4058546138493
B27 258	3	SHORT LEG	5131032779	4058546138509
B28 259	3	LEG CAP	5131032780	4058546138516
B29 260	4	HEAD SQUARE NECK BOLT M6X40	5131032781	4058546138523
B30 261	1	ADJUSTMENT LEG	5131032782	4058546138530
B31 262	1	NUT OF THE FEET	5131032783	4058546138547
B32 263	1	SHORT LEG 30	5131032784	4058546138554
B33 264	1	FRONT LEG 30	5131032785	4058546138561